

Castle FARM

KENT, 1892

FILMING & PHOTOSHOOTS

WITH OVER 1,200 ACRES OF LAND,
CASTLE FARM OFFERS A VARIETY OF
BACKDROPS & LOCATIONS FOR FILM MAKERS
& PRODUCTION AGENCIES.

ONLY 17 MILES FROM CENTRAL LONDON.







V A R I E D L A N D S C A P E S & B E A U T I F U L V I S I O N S

Throughout the year, Castle Farm offers acres of farmland, wild flower borders, woodlands, hop gardens, water meadows, footpaths and farm tracks, suitable for fashion shoots, film locations, advertising backdrops and editorial photography. At the heart of Castle Farm stands an impressive Tudor farmhouse, which from late June to late July is surrounded by the spectacular sight of UK's largest Lavender fields.

Traditional farm buildings are mixed with abandoned sheds and barns, picturesque cottages, and an impressive freestanding threshing barn, all in an area of outstanding natural beauty in the heart of the Garden of England – yet less than 50 minutes drive from central London.



S P R I N G O N C A S T L E F A R M

As we wave goodbye to winter, the farm starts to burst into colour, with bright green water meadows and bluebell-carpeted woodlands. Our heritage Norfolk Royal apple orchard showcases full blossom come May and wildflower borders start to bloom across the farm fields.

Sheds and buildings provide plenty of varied backdrops, and scrap yards with antique agricultural equipment can give an industrial feel to contrast open farmland.



S U M M E R O N C A S T L E F A R M

The summer months bring a bounty of colour to our slice of the Darenth Valley. Lavender starts to bloom in late June until late July, deepening in purple until we harvest for its precious aromatherapy oil. The wheat, oats and barley in our arable fields turn golden in the sunshine, and our hops climb ever higher in our Hop Gardens.

The farmhouse English garden shows colour and contrast with topiary peacocks, rose bushes, wild grass paths and neatly mowed lawns.



AUTUMN ON CASTLE FARM

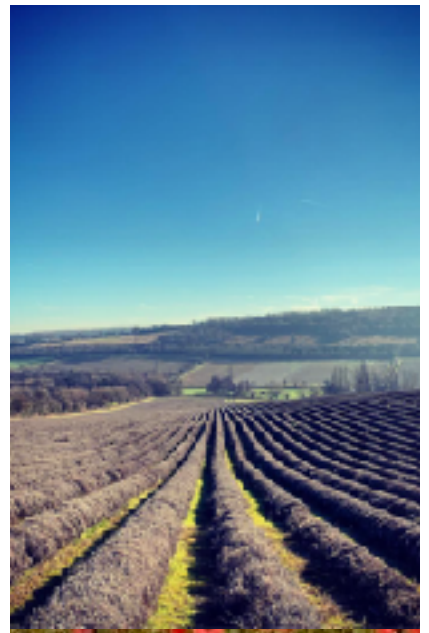
Summer purple gives way to burnt oranges and bright reds on Castle Farm, as our heritage apple orchard bears fruit and the pumpkin patch bursts with colour.

Our Hop Gardens are in their element, giving a 3m tall backdrop of green foliage, and 2m high maize stems offer drama and intrigue. Tall grasses turn a golden brown and straw bales are safely stored in our barns.



W I N T E R O N C A S T L E F A R M

Sleeping rows of Lavender offer structured lines throughout the Valley and skeleton tree forms line fields and buildings. Frost and snow sometimes decorate the valley.





B U I L D I N G S , B A C K D R O P S & B A R N Y A R D S

Flint walls, peeling paint, straw bales, abandoned buildings, concrete bricks, corrugated iron, wood piles, rolling fields or a pretty windmill... there is a true variety of backdrops to frame your shoot.



THE THRESHING BARN

An impressively vast barn was built in 1760's and used for storing agricultural crops and harvest. Now, this splendid space, with original oak beams has been transformed into a wedding venue, party location and used in multiple film sets. Flexible and adaptable, you can really make this space your own to great effect.



THE DESERTED FARMYARD

Moody and overgrown, this quiet little pocket of a farmyard has a collection of untouched corners. With wild overgrowth covering deserted brick buildings and WW2 designed abandoned army-style Nissen Huts... ivy, brambles, trees and weeds create drama and intrigue. Plenty of spots to hide, chase and disguise...





L O C A T I O N L O C A T I O N L O C A T I O N

Castle Farm is only 17 miles from the centre of London.

Easily reached in 50 minutes by car, or 40 minutes by train.

Address: Castle Farm, Redmans Lane, Shoreham, Sevenoaks, Kent TN14 7UB



F A C I L I T I E S

- Covered crew space for production teams
- Crew toilet facilities
- Hardstanding-ground for winnebago's and catering vehicles
- Access to the farm shop for supplies or a tab for the Coffee Cart (summer only)
- Agricultural and heritage props
- Dried flowers and floristry props
- Experienced on-site location manager
- Catering recommendations





GET IN TOUCH

Contact us for location fees and availability.

locations@castlefarmkent.co.uk

01959 523 219

